

The logo for Drogheda Town Centre is centered at the top of the page. It features the word "DROGHEDA" in a multi-colored, sans-serif font (D: orange, R: blue, O: green, G: yellow, H: purple, E: red, D: blue, A: green). Below it, the words "TOWN CENTRE" are written in a smaller, white, sans-serif font, with a horizontal line above the text.

DROGHEDA
TOWN CENTRE

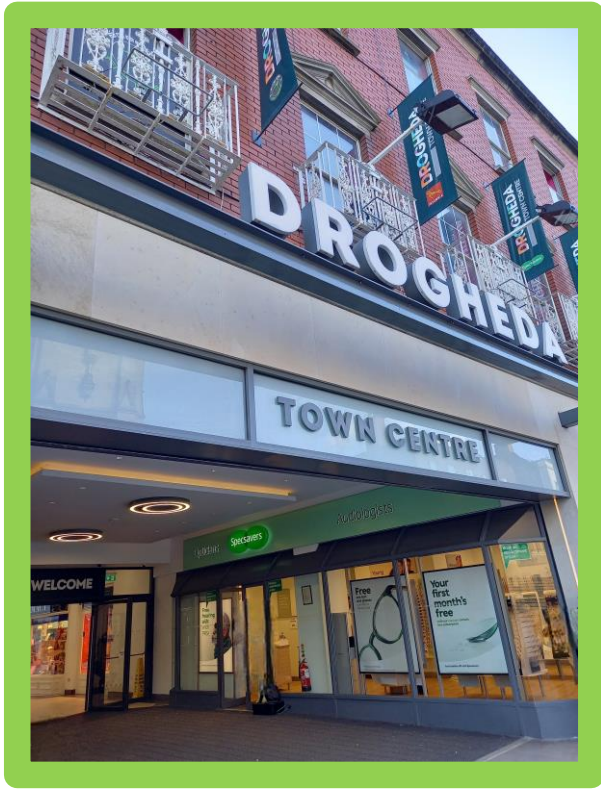
Drogheda Town Centre

The "StoryBoard" logo is located in the bottom left corner. It is enclosed in a light blue rectangular box with a darker blue border. The word "StoryBoard" is written in a colorful, sans-serif font where each letter has a different color: S (red), t (orange), o (green), r (blue), y (purple), B (yellow), o (dark blue), a (green), r (red), d (dark green).

StoryBoard

The logo for Autism Support Louth&Meath is in the bottom right corner. It features a stylized lowercase "a" in blue with a yellow plus sign to its upper right. To the right of this icon, the text "Autism Support" is written in blue, with "Louth&Meath" in a smaller font below it.

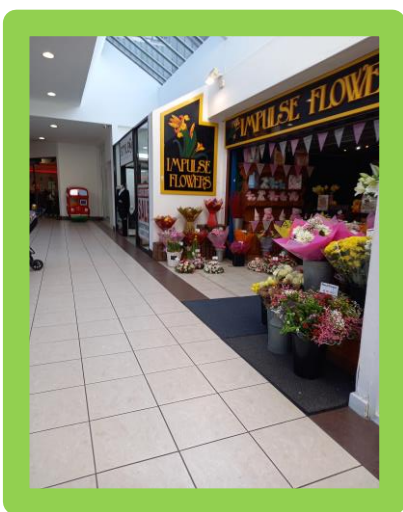
a+ Autism
Support
Louth&Meath



This is the main entrance to Drogheda Town Centre. I can walk straight through the door to enter the shopping centre from West Street.



There is also a car park located on Dyer Street. Once I have parked my car I can access the shopping centre from the car park.



When I enter, I will find lots of different stores here including retail stores, an opticians, a barber, a gym a pharmacy and a florist.

There is also a cinema, a café, a deli and two different American-style restaurants here.



There is a café and a seating area in the centre of the shopping centre.

I can come here if I want something to eat or drink.

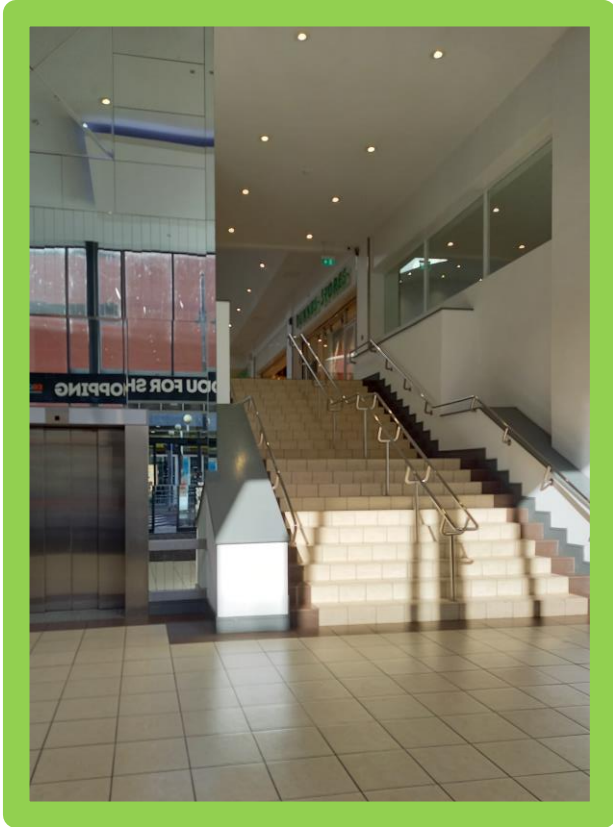
I can also come here to sit down if I need a break.



There are toilets located just passed the main entrance.

I can follow the sign that hangs above it located passed the pharmacy.

There are male, female and wheelchair-accessible toilets.



There are stairs at the back of the shopping centre that lead to the back entrance/ exit on Dyer Street.

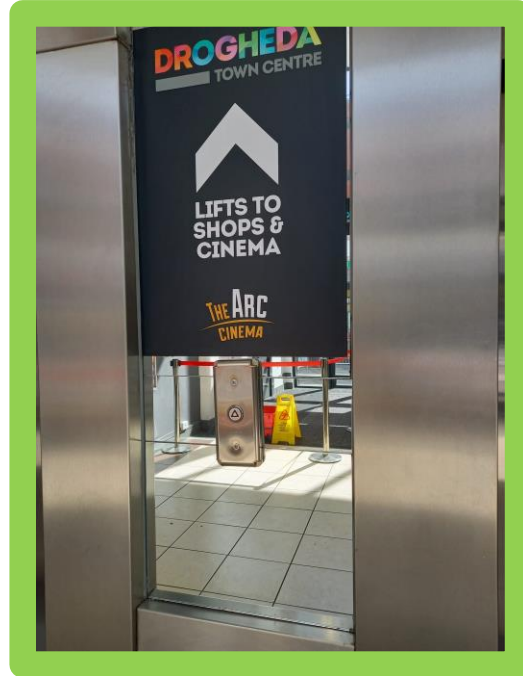
There is also a lift. I can use these to enter or exit the shopping centre from Dyer Street.



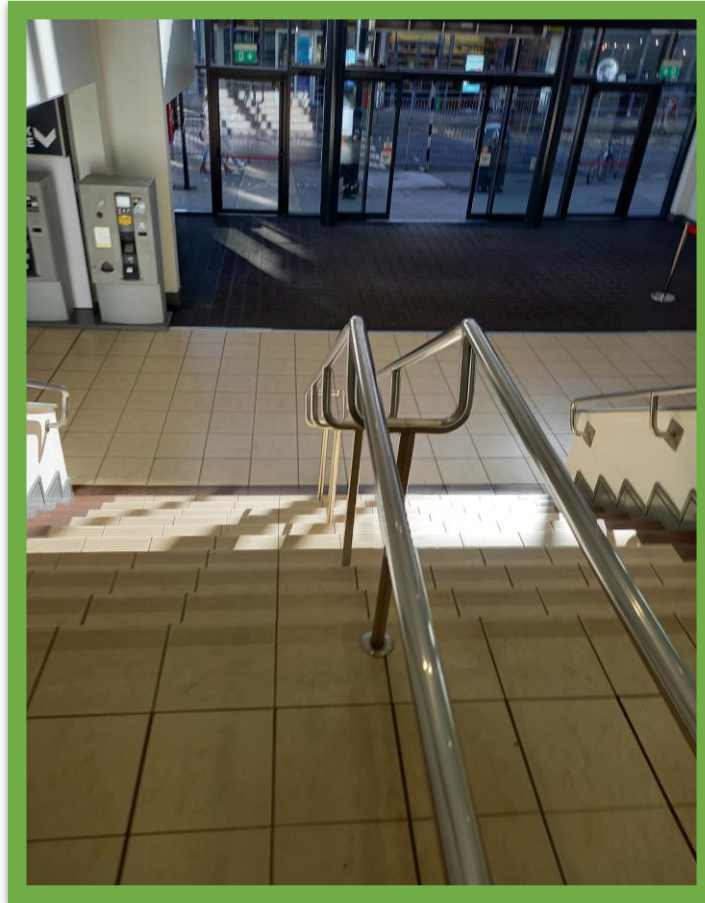
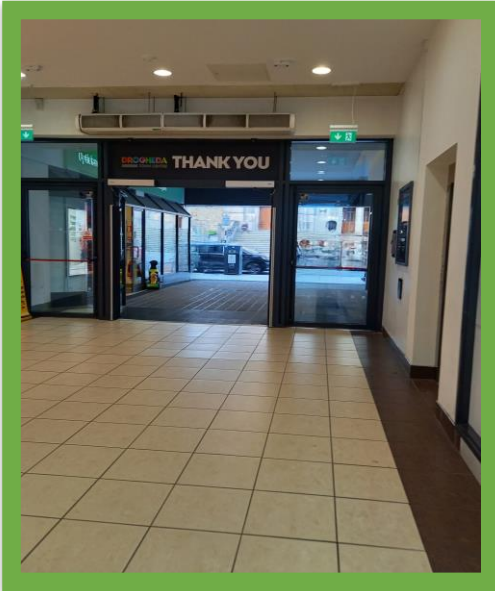
The lift in Town Centre can be used to get to the shops and the cinema.

When the door opens I will step into the lift. I will choose which floor I want to go to and press the button. The doors will close and the lift will go up or down.

When the lift stops, the doors will open and I will step out.



There is also a cinema located on the top floor. I can get the lift to the cinema or I can walk up the stairs located past the cafe.



When I am finished shopping I can leave through either of these doors or through the car park.

The doors onto the streets are located at either end of the Town Centre.

Thank you for visiting Drogheda Town Centre
We hope that you have enjoyed your experience.

Please contact us if you have any queries or suggestions.

Storyboard Company, Drogheda, Co. Louth
www.storyboardpictureguide.ie
Email: elsa@autismsupportlouth.com
Phone: 0861764095

For any Autism Queries please contact Autism Support Louth&Meath
www.autismsupportlouth.com
Phone: +353 86 176 4095
Email: info@autismsupportlouth.com

To get in contact with Drogheda Town Centre
Email: info@droghedatowncentre.ie
Phone: 041 983 3386